

# St. Mark's Lutheran Church

QUARTERLY JOURNAL OF REFLECTIONS AND NEWS  
SPRING 2015

# Voice

## Where will you encounter God this Easter Season?

“To make bread., to dig in the earth, to feed an animal or cook for a stranger—these activities require no extensive commentary, no lucid theology. All they require is someone willing to bend, reach, chop, stir. Most of these tasks are so full of pleasure that there is no need to complicate things by calling them holy. And yet these are the same activities that change lives, sometimes all at once and sometimes more slowly, the way dripping water changes stone. In a world where faith is often construed as a way of thinking, bodily practices remind the willing that faith is a way of life.”

Barbara Brown Taylor,  
*An Altar in the World: A Geography of Faith*

Blessings to you this Easter season,  
Pastor Bekah Davis

### What's Inside

Holy Week and Easter Worship

Pastor Elizabeth's Ecumenical  
Journey with the ELCA Delegation

Save the Date for  
Summer Day Camp in 2015

A Photo Feature on Social Ministry  
Activities at St. Mark's in 2014

News from the Garden

Church Mice Tales: When  
Hollywood Came to St. Mark's

News from Our "Alumni"  
Seminary Students

**Saturday, March 28, 2015 12:00 PM – 3:00 PM**  
**Training for New and Current Worship Leaders**

Assisting Ministers • Lectors • Ushers • Acolytes • Flower Arrangers  
A light lunch will be provided. For more info or to RSVP: [info@stmarks-sf.org](mailto:info@stmarks-sf.org)



# Holy Week and Easter Worship

## *at St. Mark's Lutheran Church*

### **MARCH 29 • 9:00 & 11:00 AM PALM SUNDAY WORSHIP**

Palm branches in hand, we join a procession singing Hosannas. The procession leads us to the cross of Christ and into the mystery of his passion.

### **APRIL 2 • 7:00PM MAUNDY THURSDAY WORSHIP**

At the Lord's table, we remember Jesus' sacrifice of his life, even as we are called to offer ourselves in love for the life of the world.

### **APRIL 3 • GOOD FRIDAY 12:00 PM • STATIONS OF THE CROSS 7:00 PM • LITURGY OF GOOD FRIDAY**

At the heart of the liturgy is the Passion according to John, which proclaims Jesus as the triumphant king who reigns from the cross

**APRIL 4 • 8:00PM • EASTER VIGIL WORSHIP**  
This is our Passover with Christ from darkness to light, from bondage to freedom, from death to life. This night is the heart of our celebration of the Three Days and the pinnacle of the church's year.

### **APRIL 5 - EASTER SUNDAY**

**9:00 AM • FESTIVE EASTER WORSHIP**  
Joyful, traditional Easter music  
St. Mark's Adult and Children's Choirs  
Special Easter gifts for all children

**10:15 AM • EASTER EGG HUNT**  
Children of all ages are welcome to this fun-filled activity on the Square

**10:30 AM • BAROQUE EASTER CELEBRATION**  
Come and listen to glorious organ music celebrating Christ's Resurrection

**11:00 AM • FESTIVE EASTER WORSHIP**  
Joyful choral and traditional Easter music  
St. Mark's Adult and Children's Choirs  
Organ, piano, strings and brass accompaniment  
Special Easter gifts for all children

- Childcare is available on Easter morning •

**FESTIVE EASTER COFFEE HOUR**  
following each service in Heritage Hall

### ***Music Notes for Holy Week and Easter***

Holy Week, the week from Palm (Passion) Sunday through Easter Sunday is the busiest, most music filled week of the entire year for church musicians. From our entry into the Easter experience on Palm Sunday, through the solemn liturgies of the Triduum (Maundy Thursday, Good Friday, The Vigil of Easter), and culminating in the joyous celebration of the Resurrection on Easter morning, music will (hopefully) amplify our emotional experience, deepen our meditations, and give expression to our praise.

### **Some musical highlights during Holy Week**

#### **Maundy Thursday**

*Ubi caritas* - Maurice Duruflé

*Not What These Hands Have Done* - Jonathan Kohrs

#### **Good Friday**

*Passion According to St. John* - Victoria

*Vinea mea electa* - Francis Poulenc

*When I Survey the Wondrous Cross* - Philip W.J. Stopford

*Adoramus te* - Eric Barnum

#### **Easter Vigil**

*Easter Anthem* - William Billings

*Dem Bones, dem bones*

*Christ lag in Todesbanden* - Emma Lou Diemer

### **Special Music on Easter Sunday**

#### **At 8:45 am from the organ**

*Christ lag in Todesbanden, BWV 718 & 695* - J. S. Bach

#### **At 10:30 am**

*Woman, Why Weepest Thou?* - Heinrich Schütz

*Heut triumphiert Gottes Sohn* - Johann Schelle

#### **During 11:00 am worship**

*Festival Arrangement of Setting 9* (from the ELW)

*Haec dies* - Palestrina

*Today in Triumph Christ Arose* - Dietrich Buxtehude

*Easter* - Carl Smith

*Christ ist erstanden, BWV 627* - J.S. Bach

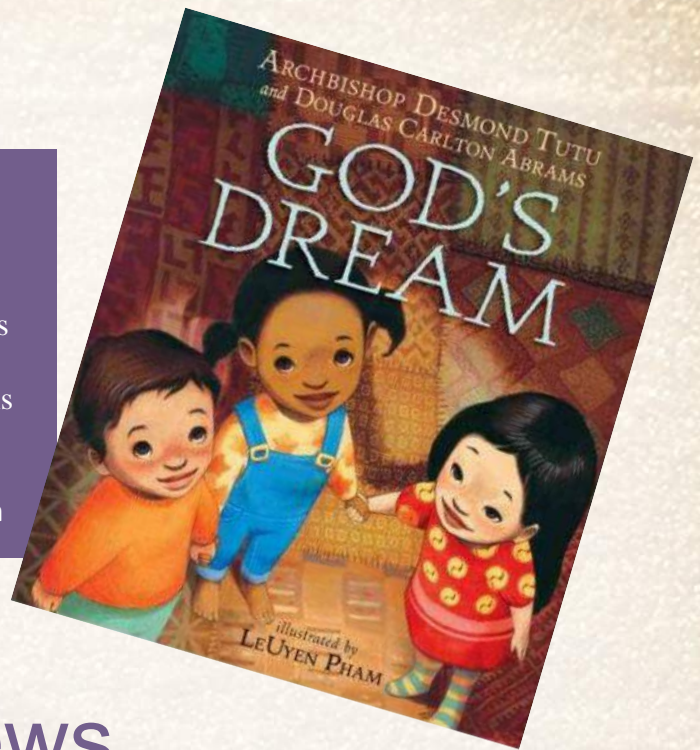
*Prelude and Fugue in D Major, BWV 532* - J. S. Bach



### Nursery News

A heartfelt THANK YOU to all who donated to the recent funding appeal for Bible-themed children's books for St. Mark's nursery. Members of our congregation gave a total of \$225, which allowed the nursery committee to purchase dozens of books that will help our nursery children learn more about Christ's love.

Brandee Marckmann



## Sunday School News

It was sad to say good-bye to the Salls after six years of leading Children's Chapel. However, a new volunteer has stepped forward: Elisabeth Lowry. Elisabeth has been attending St. Mark's for years. She teaches with the Music Together of San Francisco program for infants to 5 year olds. She also works in administration at the Conservatory of Music. Elisabeth leads Children's Chapel weekly with Ralph Loen. She brings joy, enthusiasm and her musical talents to our children. In addition to teaching our younger children songs, she encourages the older children to contribute their talents. We are so lucky to have her!

Kate Knickerbocker is also a new volunteer teacher at St. Mark's. Kate is an ESL teacher and English tutor at College of Marin. She "loves helping out at Sunday School." Kate's family has been worshipping at St. Mark's for over a decade, and despite living in Marin, she's "happy to drive in for such a great church!" Kate is Sarah and Charlie's mom. She co-teaches the K-2nd grade class with Adrienne Brown. Two busy moms of young children, finding time to teach Sunday School!

Jenny Hart



*Our new chapel leader, Elisabeth Lowry*

### Sunday School Highlights This Spring

**March 22nd: Big Group:** All ages meet together to celebrate a Passover meal and learn about Jewish traditions.

**March 29th: Big Group:** All age groups meet together in the Urban Life Center to make Easter Crosses and celebrate Palm Sunday.

**April 5th:** No Sunday School - but the Children's Chapel sings at both services! Don't miss the Easter Egg Hunt at 10:15 AM.

**April 26th: Big Group:** All ages meet together with the Pastor, who will give a lesson on Communion and Baptism.

**May 17th: No Sunday School:** Bay to Breakers Sunday makes it impossible for the teachers to be here!

**May 24th:** Memorial Day: Regular Classes

**May 31st:** Last Day of Sunday School. Come for a PARTY!



## Women's Monthly Study Gatherings

All women are welcome to the Women's Monthly Study *Gatherings*. Two different groups meet at different dates, times and using different study materials.

### First Tuesdays from 6:30pm to 8:30pm in the Fireside Room

All women are invited to gather on the first Tuesday of the month from 6:30pm to 8:30pm in the Fireside Room. You are invited to come for dessert and fellowship for the first half hour and then discussion until 8:30. Our books for Spring 2015 are:

April 7 – *Things Fall Apart* by Chinua Achebe

May 5 – *Knocking on Heaven's Door: The Path to a Better Way of Death* by Katy Butler

### Second Tuesdays from 11:00am to 1:00pm in the Fireside Room

All women are invited to come for study at 11:00 and at noon to bring their sandwich or salad and share fellowship. Drinks and dessert will be provided. This year our focus will be on *Transforming Life and Faith* by Carol Scheersten LaHurd. Our program topics for Spring 2015 are:

April 14 – Inspired by the Risen Lord

May 13 – The Church Transforming and Reforming

Questions? Contact Suzanne Smith at 415.285.7438 or [suzathome@comcast.net](mailto:suzathome@comcast.net).

## Adult Forum Calendar

Most Adult Forums begin at 10:10 AM on Sunday mornings in the Urban Life Center Auditorium. Check the Parish Announcements for updates about times and locations.

### March 22

Courtney Henson, a frequent worshipper at St. Mark's, speaks about asylum in the United States. She will focus on the recent influx of asylum seekers, many of whom are women and children fleeing gang violence in Central America, and the unique challenges to our asylum system.

### March 29 (in Heritage Hall)

Join the Social Ministry team in writing letters on behalf of Bread for the World's 2015 Offering of Letters. One in five American children lives in a family that struggles to put food on the table - but your letters to Congress can change that. Bread for the World advocates for all children to receive the "daily bread" that enables them to learn, be healthy, and grow strong.

### April 12; May 3-24

#### Claimed, Gathered, Sent

Does being the church matter? If it does, why and how do we as members of the Evangelical Lutheran

Church in America (ELCA) make a difference in the world? By being church together, what can the ELCA uniquely offer to the world? Over the course of five Sundays, we will reflect, converse, and discern about what being the church means today.

### April 19

Zach Dinh, Urban Mobility Strategist for the San Francisco Municipal Transportation Authority (SFMTA), will lead a general discussion on how public transportation links to sustainability and then talk about some more innovative things his team is doing in regards to Transportation Demand Management (TDM). Learn how transit planning can benefit our community.

### April 26

St. Mark's member Dr. Kyle Schiefelbein is an adjunct professor at Pacific Lutheran Theological Seminary. In this adult forum, he will discuss a Lutheran theology of healing in which Christ is both doctor and remedy, one of the topics covered in his recent dissertation. This will be placed alongside the church's current ritual practices of healing.



# Spring 2015 Community Concerts at St. Mark's

## **Saturday, March 14, 7:30 PM**

San Francisco Renaissance Voices - <http://sfrvoices.org/>  
*MERRIE OLDE ENGLAND: English Country Dances & Madrigals*

## **Sunday, March 15, 3:00 PM**

Symphony Parnassus - <http://symphonyparnassus.org/>  
*Shostakovich & Beethoven*, featuring Jeremy Tai

## **Friday, March 20, 8:00 PM**

American Bach Society - <http://americanbach.org/>  
*Bach's Birthday Celebration*, featuring Chromatic Fantasy & Fugue; Toccata, Adagio, & Fugue in C Major; Flute Sonata in E-flat Major; and other works by Bach, Couperin, and Newman

## **Saturday, March 21, 8:00 PM**

Voices of Music - <http://voicesofmusic.org/>  
Agostino Steffani's *Stabat Mater* and the Carissimi oratorio *Vanitas, Vanitatum* (St. Mark's members may use the code "cmstef" through March 19 to purchase discounted tickets.)

## **Sunday, March 22, 4:00 PM**

Noe Valley Chamber Music - <http://nvcm.org/>  
2015 Benefit Concert with mezzo-soprano Susanne Mentzer

## **Friday, March 27, 7:30 PM**

Omni Foundation for the Performing Arts - <http://omniconcerts.com/>  
*Cultural Crossroads* featuring Hye-jin Kim, violin and João Luiz, guitar

## **Saturday March 28, 8:00 PM**

San Francisco Choral Artists - <http://www.sfca.org/>  
*Wisdom, Wit and Wonder*

## **Sunday, March 29, 4:00 PM**

San Francisco Early Music Concert - [http://sfems.org](http://sfems.org/)  
Artifice performs *Resonance of Salzburg: Biber, Vilsmaier, Muffat*

## **Monday, March 30, 7:30 PM**

San Francisco Performances - <http://sfperformances.org/>  
*Goethe in SCHUBERT and RIHM*

## **Saturday, April 11, 7:30 PM**

Omni Foundation for the Performing Arts - <http://omniconcerts.com/>  
Eliot Fisk, guitarist

## **Sunday, April 12, 4:00 PM**

San Francisco Early Music - <http://www.sfca.org/>  
ENSEMBLE MIRABLE with Dan Laurin

## **Saturday, April 18, 8:00 PM**

San Francisco Bay Area Chamber Choir - <http://www.sfbaychoir.org/>  
Spring Concert featuring the poetry of Walt Whitman and Rainer Maria Rilke

## **Sunday, April 19, 4:00 PM**

San Francisco Girls Chorus - <http://www.sfgirlschorus.org/>  
*Children's Crusade Cantata*

## **Friday, April 24, 8:00 PM**

California Bach Society - <http://www.calbach.org/>  
*An Italian Lineage: Carissimi, Scarlatti, Verdi, and Pizzetti*

## **Saturday, April 25, 8:00 PM**

Omni Foundation for the Performing Arts - <http://omniconcerts.com/>  
Marcin Dylla, guitarist

## **Sunday, April 26, 4:00 PM**

Noe Valley Chamber Music - <http://nvcm.org/>  
Clerestory: *Love and the Knight*

## **Sunday, May 3, 4:00 PM**

American Bach Soloists - <http://www.americanbach.org/>  
*Bach, Vivaldi, & Leo*

## **Saturday, May 9, Time TBD**

Deutscher Musikverein - <http://www.sfgermanband.org/>  
Annual Spring Concert

## **Saturday, May 9, 8:00 PM**

Sacred & Profane - <http://www.sacredprofane.org/>  
Anton Bruckner's *Mass in E Minor* and Igor Stravinsky's *Mass*

## **Sunday, May 10, 3:00 PM**

Musae - <http://www.musae.org/>  
*Monarch*, featuring works by Guillaume Dufay, Vytautas Miskinis, Stephen Smith, and Zae Munn

## **Friday, May 15, 8:00 PM**

Lacuna Arts - <http://lacunaarts.org/>

## **Saturday, May 16, 3:30 PM**

Sunset Youth Orchestra - <http://www.sunsetyouthorchestra.com/>

## **Sunday, May 17, 4:00 PM**

Noe Valley Chamber Music - <http://nvcm.org/>  
San Francisco Piano Trio

## **Saturday, June 6, 4:00 PM**

New Esterhazy Quartet - <http://www.newesterhazy.org/>  
Haydn Cantatas with Christine Brandes

## **Saturday, June 6, 7:30 PM**

International Orange Chorale - <http://www.iocsf.org/>

## **Sunday, June 7, 6:00 PM**

Golden Gate Symphony - <http://goldengatesymphony.org/>  
Beethoven: Symphony No. 9

## **Saturday, June 13, 8:00 PM**

San Francisco Choral Artists - <http://www.sfca.org/>  
*Old Masters, Young Prodigies* featuring violinist Mads Tolling

## **Saturday, June 20, 5:00 PM**

Ensemble San Francisco - <http://ensemblesanfrancisco.com/>

*Please visit the website of each concert presenter for information about concert programs and to purchase tickets. Tickets are not sold through St. Mark's Lutheran Church.*



# Ecumenical Pilgrimage Journey

The experience on the Ecumenical trip, Jan. 31 – Feb.13, with ELCA Presiding Bishop Elizabeth Eaton was invaluable for my learning and leadership at St. Mark's and within the Evangelical Lutheran Church of America (ELCA). It was a wonderful opportunity to observe ecumenical partnerships in the flesh and the hard work it takes to support those partnerships. Cardinal Tauran who heads the Pontifical Council for Interreligious Dialogue said it best, *"When we dialogue with one another, you have to know your own faith. You can not build dialogue in ambiguity. Religions are not the problem in our world; rather, ignorance of religions is the cause of many problems."*

As I reflect on the encounters with the ecumenical communities these past two weeks, I return to St. Mark's with a deeper understanding of my own Lutheran tradition and a greater appreciation of what we hold in common with other denominations. All of us who live in the Bay Area have daily opportunities for ecumenical dialogue with our neighbors, co-workers, schoolmates, and those we randomly meet. What an opportunity, gift, and challenge we have before us as Lutheran Christians who are open to dialogue and partnering with our ecumenical friends. Below is one of my reflections that I wrote in my journal during the trip:

## ***Lutherans drinking tea with the Archbishop of Canterbury***

Six of us sat down for tea and discussion with Archbishop Justin Welby. Gracious, well-spoken and inquisitive, he welcomed us into his public drawing room for conversation which included everything from Lutheran-Anglican dialogue to the global witness of Pope Francis.

Two ELCA Bishops, two members of the ELCA church council and two ELCA staff were delighted that each one of us had the opportunity to describe the challenges we face in our ministries and ask the Archbishop a question.

Knowing of his passion for spiritual renewal and prayer, I asked him if he would recommend a spiritual practice to



*The ELCA Ecumenical Pilgrimage Delegation with Archbishop of Canterbury, the Most Revd and Rt Hon Justin Welby*

the members of the ELCA to help us grow in our faith lives. His simple yet profound answer surprised us all. "Start where people are." he shared. "And, if they are interested in contemplative prayer or adoration of the sacrament, encourage them to explore this devotion which will help them grow." We all agreed that starting where people are rather than where we think they should be in the spiritual life was a helpful reminder.

Our tea ended and we proceeded to join Archbishop Welby and his staff for Evening Prayer led by the Archbishop himself. After the service concluded, he laughed at himself for inadvertently skipping a section of the liturgy. We left Lambeth Palace and braced ourselves for the freezing wind along with the Thames River but warmed by our remarkable encounter with this very humble and down-to-earth head of the Anglican Communion.

Pastor Elizabeth Ekdale



*At Left: Pastor Elizabeth at the Ecumenical Centre Chapel at the World Council of Churches in Geneva, Switzerland.*

For more photos and stories about the ELCA Ecumenical Pilgrimage, check out the "Living Lutheran" blog at <http://www.elca.org/Living-Lutheran/Photos/> and the ELCA News & Events release at <http://www.elca.org/News-and-Events/7724/>.



# Social Ministry – At Work Around the World



ELCA Pastor Kate Warn is the Rwanda Director for six Young Adults in Global Mission (YAGMs). St. Mark's has been asked to be her sponsor. She works closely with the Lutheran Church of Rwanda as well as the Rwamagana Lutheran School. We look forward to meeting her the next time she comes to the U.S. for a visit.



Top: Mumeya Clinic in Rwanda – mothers and babies can now be delivered safely in the community.

Right: Rwamagana Lutheran Secondary School in Rwanda



A woman from Regina Pacis has new hope for herself and her child. PICO Rwanda has empowered her and given her dignity.



The women dance at Regina Pacis in Kigali, Rwanda. PICO Rwanda has brought them dignity and hope.







Pancakes for Thanksgiving 2014 at Cordero de Dios in El Salvador

Worship at Cordero de Dios. Pastora Norma Castillo, Pastor Elizabeth Ekdale, and Ana Luz.



Youth from Cordero de Dios and St. Mark's had a great time together!



# Social Ministry – At Work in San Francisco



The Knitters Retreat – great projects, good conversation.

We knit scarves for Winter Homeless Shelter men, Open Cathedral worshippers, and San Francisco Night Ministry clients. We continue to knit for the streets!



## HYMN FESTIVAL & RECEPTION

What a celebration we had! David Cherwien came to help dedicate our finished St. Mark's organ and lead a glorious Lutheran HymnFest, and then we had a fun and highly successful El Salvador Gala with Silent Auction and Reverse Auction - after event expenses, we raised \$21,000 for the El Salvador Lutheran Pastors Endowment. Amazing!

(Photo by Cory Schoolland)



Cindy Hausch-Booth distributes the "weekly bread" at the Interfaith Food Pantry.



Celery is a great addition to grocery bags at the Interfaith Food Pantry.



Interfaith Food Pantry volunteers get started bright and early at 7:30 in the morning.



St. Mark's members visited the new Lutheran Social Services of Northern California offices in San Francisco and learned about the LSS money management program. This program served over 2,000 clients in 2014, helping them to manage fixed incomes and to remain in stable housing.



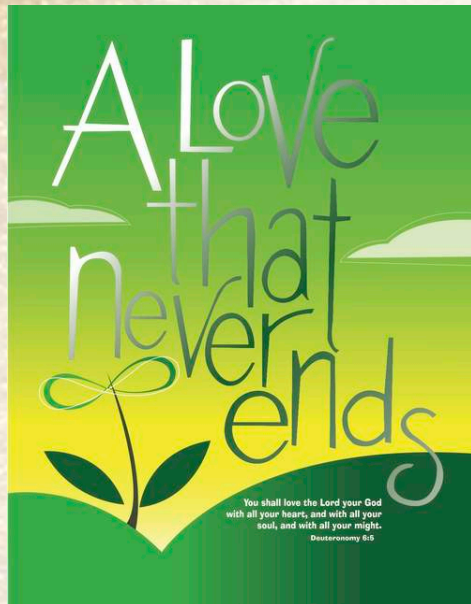
# Summer Day Camp June 29 – July 3, 2015

*You shall love the Lord your God with all your heart, and with all your soul, and with all your might. (Deuteronomy 6:5)*

Come to Day Camp at St. Mark's and learn about how we can live out our love for God and others. Campers will participate in fun-filled activities, including singing, games, arts & crafts, and skits, in a safe environment.

**Eligible Campers:** Elementary school aged children, who are ages 6-11, or who will have completed kindergarten prior to enrollment.

**Days and Times:** Day Camp runs from 9 am until 3 pm, Monday through Thursday. On Friday, the Day Camp program ends at 12 noon.



**Cost:** The cost for the weeklong program is \$90 per child. Additional siblings are \$75 each. Reduced fee or scholarships are available upon request. (If you register by May 31, 2015 you can take \$5 off the registration fee.)

**To Register:** Day camp registration forms are available in the narthex on Sunday mornings. You can also download the registration form at <http://www.stmarks-sf.org/summerdaycamp> or call the church office (415-928-7770) to request that a form be sent to you.

**For more information:** Contact Kimberly Hamilton-Lam at [mjjkmom@yahoo.com](mailto:mjjkmom@yahoo.com), (415) 565-9561.

## Commemorate and honor the 500th Anniversary of the Reformation by traveling to Germany this fall with the "Lands of Luther" Tour

Still considering whether to travel to Germany this fall with Pastors Elizabeth Ekdale and Hans Hoch? There is still room to sign up for the "Lands of Luther Tour" from October 30 – November 9! Come to an information meeting on Sunday, March 22 from 1:00-2:00 PM in the Conference Room of the Urban Life Center at St. Mark's. Pastors Elizabeth and Hans will be available to answer any questions regarding the trip. (Those who have already turned in their deposit and paperwork need not attend this meeting.)

**Reservation forms and deposits are due on Sunday, May 17.** All confirmed travelers should also save this date for a pre-trip meeting at the Pastors' home from 2:00-3:30 PM. We will serve light refreshments and use this opportunity to begin building our community, looking at the itinerary in detail, and preparing our hearts and minds for this trip. Pastor Elizabeth will share reading materials at this meeting for study over the summer. Preparations will begin in earnest in the fall.

If you have any questions about the "Lands of Luther" Tour, please don't hesitate to contact Pastor Elizabeth: [ekdale@stmarks-sf.org](mailto:ekdale@stmarks-sf.org), 415 928-7770 ext. 2300. Brochures are available upon request, or can be picked up in the church office or the narthex on Sunday mornings.



# From the Endowment Committee: *How, Then, Shall We Give?*

*This article is based on remarks made at the Annual Congregational Meeting on January 25, 2015.*

In January, Herbert Anderson—Lutheran pastor, writer, professor, colleague, and friend—graced us at Adult Forum with his reflections on “the divine art of dying.” He gently described that unique moment when seriously ill or frail people choose “to turn toward death,” not to run away from life, but to live life *more fully* in the shadow of death. In such slow, deliberate, grace-full turning, one is freed to ask, “How then shall we live?”

“*How then shall we live?*”—an important question for us all; and a question that begs a follow-up query, “How then shall we give?” Since we can’t take it with us, “*How then shall we give?*” now and into the future.

Our thinking about living and dying opens our hearts to possibility, to generosity, to loving the neighbor—and, yes, to giving. Over the years, members of St. Mark’s have made that turn toward death and given a portion of their estate to this congregation so that we can continue to love the neighbor, on the streets of San Francisco, Soyapango, and Kigali.

In 2011, St. Mark’s established the Endowment Fund to help those who want to extend their living generosity beyond death. Every dollar given to the Endowment Fund stays there, earning interest, which comes back—and will always come back—to us.

2014 was a year to remember for the Endowment Fund as we were able to send \$2000 of that earned interest out to work in the world--\$1500 was given to our El Salvador Committee in support of their Gala to raise funds for salaries for Lutheran pastors in El Salvador, who currently serve without pay. The fun and festive Gala raised \$21,000 free and clear—a \$21,000 return on a \$1500 investment, eat your heart out Wall Street! Our partners in the gospel, the Lutheran Volunteer Corps, received \$500 for training in sustainable living and social justice with Seminary of the Street. We are optimistic that there will be more funds available in 2015, supporting more opportunities to extend our love to the neighbor and to creation.

On All Saints Sunday, we celebrated these grants and recognized our generous donors—angels all—with golden wings and goeey cupcakes.

The Endowment Fund began with \$25,000. Currently, the Fund is approximately \$120,000 thanks to well-managed investments, members who remembered St. Mark’s during estate planning and those living angels who made a cash gift.

In 2014, \$7200 was received from bequests; \$2200 from cash contributions, from people just like you.

I want to take this opportunity to ask you to thank the Endowment Committee members the next time you see them for the extraordinary work they did in 2014—work done with expertise and good humor in preparation for our first grants. Please thank: Stacy Cullison, Greg Jahnke, Marisa Louie (Council Liaison), Robert Rathmell, Randy Schieber, Shelly Taylor, and Debbie Varian (Secretary and Fund Advisor). I encourage each of you to talk to one of us about “how then shall we give?”

Margaret R. McLean, Chair  
Endowment Committee

## “STORIES FROM THE HEART” Event Sunday, April 19, 2015 1:00-2:00 PM

Have you ever heard a story that inspired you? A story that filled you with emotion, passion or possibility? Just today I heard a story from a client who had to make a decision on money inherited from her mother. As she literally said, "Hi Mom!" when she looked at the paper describing her deceased mother's account, it was clear that the dollars represented so much more than dollars and cents. They embodied a piece of her mom. I was moved to witness her reaction.

On Sunday, April 19, the St. Mark's Endowment Committee will sponsor "Stories from the Heart", an event where stories of people who have made choices that fill their money with intention will be shared. Chris Andersen, president of the InFaith Community Foundation, will lead us in a session of stories that will inspire as well as educate us. We hope you will learn some ideas of how to fill your money with intention for yourself, your family and, possibly, St. Mark's Endowment Fund.

We will meet in Heritage Hall immediately after coffee hour from 1:00 - 2:00 pm. We hope to entice you to join us by offering a good program and freshly made strawberry shortcake!

We will also announce the amount available for grants from the fund in 2015.

Please join us!

Gregory Jahnke  
Endowment Committee



# Malaria Campaign Update

## *ELCA Malaria Campaign: St. Mark's Honored at a Churchwide Level*

The ELCA World Hunger Leaders conference convened in San Francisco during January 16-18, with two World Hunger leaders from each synod attending the conference. A Malaria Campaign celebration banquet was held at St. Mark's to celebrate the campaign raising \$13.5 million – just \$1.5 million shy of the \$15 million goal to be raised by the end of 2015.

St. Mark's was honored at this banquet for giving over \$47,000 toward the campaign. In terms of dollars given to the Campaign from congregations, we are near the top. ELCA World Hunger staff presented us with a framed certificate and a lovely fair trade hand-woven basket from Africa.

At the time of press, our synod has raised over \$300,000 for the Malaria Campaign. This puts us at 11<sup>th</sup> out of 65 synods.

2015 is the last year of the ELCA Malaria Campaign. When the Campaign first began, every 45 seconds, a child in Africa would die from malaria. Last year, that rate was once every 60 seconds. Now it is more than every 60 seconds. This is still incredibly sobering, but we are seeing more hope.

In 2016, the work of the ELCA Malaria Program will continue as a part of ELCA World Hunger. Our church body is committed to standing in solidarity with people who live with this disease, as we are all part of the body of Christ.

Brandee Marckmann



*Labyrinth drawn in St. Mark's Square on  
God's Work Our Hands Sunday 2014*

## News from St. Mark's Garden

Friends and neighbors of St. Mark's from Carillon Tower who maintain the garden on the south side of the church building will provide our community with a temporary chalk-drawn labyrinth on the Square on Saturday, March 28. All are invited to walk the labyrinth before or after worship on Palm Sunday. Labyrinths can be thought of as symbolic forms of pilgrimage; in ancient times those who could not afford to go on a pilgrimage would use labyrinths as a substitute for a holy journey. As you walk into the center of the labyrinth let go of stress and concerns, and contemplate your spiritual center. As you walk out of the labyrinth take the positive energy to commit to practices of contemplative prayer and meditation to begin Holy Week. For more information about the labyrinth and the garden, visit <http://www.stmarksgarden.org/>.



# News from St. Mark's "Alumni" Seminary Students

Recent intern **Rebecca Swee** has been assigned to the Sierra Pacific Synod and teaching parish student **Maggie Falenschek** has been assigned to the Southern Illinois Synod. They will be entering the call process with their assigned synods soon.

Teaching Parish Student **Maria Anderson** was called in October 2014 to serve a missional community that is a partnership between the New England Synod, the Episcopal Diocese of Maine, and St. Ansgar Lutheran Church of Portland, Maine. Read more about her ministry on the Pacific Lutheran Theological Seminary website:

<http://www.plts.edu/alumni/story.php?id=11222>

Intern **Eric Huseth** was called to and currently serves as pastor of Our Savior's Lutheran Church in Bonner, Montana. He was ordained on January 31, 2015 at his childhood congregation, Westwood Lutheran Church in St. Louis Park, Minnesota; Council President Jeremy McClain (who served on Eric's intern committee) traveled to Minnesota for the occasion.

Please hold these individuals and their ministries in your prayers.

*Top: Clergy bless Eric during his ordination; among those present was Eric's grandfather.*

*Bottom: Abby and Eric Huseth. Abby is currently a graduate student at the University of Montana at Missoula.*



## Sacred Events at St. Mark's

Join us in commemorating the recent sacred events in our parish:

### Memorial Service

Jim Benson  
January 11, 2015

### Baptism

Linnea Marais Helland  
December 28, 2014

## Annual Giving 2015

### General Fund

# of Pledges: 114 out of 193 possible  
Total Pledged for 2015: \$401,400  
Received thru 2/28/2015: \$63,200

### Restricted Income Total Rec'd: \$103,845

Social Ministry: \$200  
El Salvador Sister Parish Ministry: \$75  
Elevator Fund: \$101,300  
ELCA World Hunger: \$615  
Misc. Contributions: \$1,655

### Income versus Expenses

<u>Jan-Feb 2015</u>	<u>Actual</u>	<u>Budget</u>	<u>Actual vs. Budget</u>
Income (St. Mark's)	\$97,039	\$94,113	\$2,926
Income (ULC)	\$25,417	\$24,483	\$934
<b>TOTAL</b>	<b>\$122,456</b>	<b>\$118,596</b>	<b>\$3,860</b>
Expense (St. Mark's)	\$95,401	\$99,053	(\$3,652)
Expense (ULC)	\$26,101	\$20,801	\$5,300
<b>TOTAL</b>	<b>\$121,502</b>	<b>\$119,854</b>	<b>\$1,648</b>
<b>NET INCOME</b>	<b>\$954</b>	<b>(\$1,258)</b>	<b>\$2,212</b>







## Council Meeting Highlights

### November 2014

- Received annual report of the Endowment Committee
- Received news about staffing changes and discussed plans for farewell party for Jun Ranches
- Formed nominating committee to seek new Council members for January 2015 slate and prospective members for finance committee
- Discussed needs for emergency preparedness and drills
- Encouraged our community to attend the First Unitarian Universalist Church Advent Fair & Luncheon

### January 2015

- Presentation by Budget & Finance Coordinator of the 2015 budget
- Received report and recommendation from the Elevator Committee for their selection of ARG as the architectural firm for the elevator project and a possible capital campaign
- Discussed plans for February Council retreat
- Discussed participation in consumer loyalty programs and need for an eScrip coordinator
- Passed motions relating to housing allowances for pastors

To receive copies of the minutes for Council meetings or Congregational meetings, please contact the Church Office at [info@stmarks-sf.org](mailto:info@stmarks-sf.org) or by calling (415) 928-7770.

## 2015 Congregational Meeting

The annual congregational meeting was held Sunday, January 25, 2015 following the 11 am worship service. Highlights of the meeting included:

- The election of new and returning Council members. New to Council are Cristin Owens and Viknesh Silvalingam (three year terms); Jeremy McClain, Clovis Curl (two year terms), and Mark Semonian (one year term) are returning. The annual Council retreat is February 7-8 at St. Columba Retreat House in Inverness.
- The passage of a ballot granting permission to Council to enter into contracts for architectural and pre-construction services for installing an elevator in the church building and replacing the sanctuary and chancel floors. St. Mark's commitment to the elevator was part of the 2010-2013 strategic plan.
- A report from Shelly Taylor, Budget and Finance Coordinator, and presentation of the 2015 budget, which was approved by the congregation.
- Reports from Pastor Elizabeth, Pastor Bekah, and Church Council President Jeremy McClain. Pastor Elizabeth spoke about the baptismal prayer to "immerse us in your grace... so that we may follow."
- A report from Martin Luther Tower Board President Jon Moeller. The MLT Board currently seeks two new members, particularly those with skills in finance, technology, law, or real estate assistance.
- A report from Margaret McLean on behalf of the Endowment Committee, and an update from Brandee Marckmann about the ELCA Malaria Campaign.

February 2015 "St. Mark's Our Planet" Hike at McLaren Park





# Time and Talent Surveys: Results and Plans

Many thanks to all who completed the Time and Talent Survey! The survey was open from October 2014 through January 2015 and there were a total of 53 respondents. Seventy percent of surveys were completed electronically which enabled easier analysis and resulted in a more environmentally friendly survey by reducing paper used.

The top three ministries where new interest was expressed were: Social Ministries, Sunday School/Youth Education and Worship. Council has developed a plan of action based on the survey results and has initiated several tasks. A letter of appreciation will be sent to all respondents thanking them for participation in the survey and their willingness to serve. We have also established council liaisons to the ministry chairs and will be meeting to discuss ministry needs over the next few weeks. The liaisons and ministry chairs will then be teaming up to conduct “house meetings” with all interested volunteers to promote community within ministries and discuss volunteer assistance needed.

Council has been working with Joaquin Sanchez, a community organizer from the Bay Area Organizing Committee, and had a special training on “house meetings” at our retreat this February. We will be utilizing techniques learned at the retreat for our house meetings. Goals of the meetings will be to connect congregants with similar interests, make plans for volunteer support needed and strengthen the overall sense of community at St. Mark’s.

Again, thank you to all our current volunteers and survey respondents for supporting the ministries of St. Mark’s. Your participation is vital in continuing the important work needed and strengthening our community. Please watch for additional information coming about house meeting schedules. In the meanwhile, if you have questions about a specific ministry, please contact the council liaison or chair.

*Some of St. Mark’s office volunteers at the annual Volunteer Appreciation Luncheon, January 2015*

## Council Liaisons to Ministry Teams

- Worship & Music - Jeremy McClain ([mcclain@stmarks-sf.org](mailto:mcclain@stmarks-sf.org)) and Andrew Sallach ([sallach@stmarks-sf.org](mailto:sallach@stmarks-sf.org))
- Social Ministry (International) - Matt Helland ([helland@stmarks-sf.org](mailto:helland@stmarks-sf.org))
- Social Ministry (Local) - Jane Borg ([borg@stmarks-sf.org](mailto:borg@stmarks-sf.org))
- Finance & Stewardship - Kimberly Hamilton-Lam ([hamilton-lam@stmarks-sf.org](mailto:hamilton-lam@stmarks-sf.org))
- Adult Education - Viknesh Silvalingam ([silvalingam@stmarks-sf.org](mailto:silvalingam@stmarks-sf.org))
- Youth Education & Youth Ministries - Lisa Gray ([gray@stmarks-sf.org](mailto:gray@stmarks-sf.org))
- Hospitality - Bill Mooney ([mooney@stmarks-sf.org](mailto:mooney@stmarks-sf.org))
- Evangelism & Outreach - Clovis Curl ([curl@stmarks-sf.org](mailto:curl@stmarks-sf.org))
- Property - Mark Semonian ([semonian@stmarks-sf.org](mailto:semonian@stmarks-sf.org))
- Martin Luther Tower & Senior Ministries - Cristin Owens ([owens@stmarks-sf.org](mailto:owens@stmarks-sf.org)) and Andrew Sallach ([sallach@stmarks-sf.org](mailto:sallach@stmarks-sf.org))
- Young Adult, SMOP/SMART Groups - Cristin Owens ([owens@stmarks-sf.org](mailto:owens@stmarks-sf.org))

Lisa Gray  
Church Council

If you were unable to complete a Time and Talent Survey but would like to submit one, it’s not too late! Go to <http://tinyurl.com/n96kxhf> or obtain a paper copy of the form by contacting the church office.







1111 O'FARRELL STREET, SAN FRANCISCO, CA 94109  
(415) 928-7770 PHONE | (415) 928-8534 FAX  
www.stmarks-sf.org

### Staff

**The Rev. Elizabeth E. Ekdale**  
Lead Pastor  
ekdale@stmarks-sf.org

**The Rev. Bekah Davis**  
Associate Pastor  
davis@stmarks-sf.org

**Dr. Timothy Zerlang**  
Director of Music  
zerlang@stmarks-sf.org

**Stefani Lawrence**  
Interim Office Manager  
lawrence@stmarks-sf.org

**Cheryl Garcia**  
Bookkeeper  
garcia@stmarks-sf.org

**The Rev. Chuck Lewis**  
Visitation Pastor

**Carl Storey**  
Security

**Shirley Liu**  
**Elvira Markov**  
**Johanna Najera**  
Nursery Attendants

**Jenny Hart**  
Sunday School Coordinator

**Jeremy McClain**  
Church Council President &  
Interim Events Administrator  
mcclain@stmarks-sf.org

### Regular St. Mark's Worship Schedule

#### Sundays

9:00 am .....**HOLY COMMUNION** w/Children's Time  
10:00 am .....Sunday School  
10:10 am .....Adult Forum  
11:00 am .....**CHORAL EUCHARIST**  
12:15 pm .....Refreshments and Fellowship Hour

#### Wednesdays

6:00 pm .....Midweek Supper  
6:45 pm .....**MIDWEEK HOLY COMMUNION**

Check our weekly Parish Announcements  
[\(http://www.stmarks-sf.org/blog/\)](http://www.stmarks-sf.org/blog/)  
for more events and activities at St. Mark's!

#### Church Office Hours

Monday through Friday 9:00 am to 5:00 pm

#### Upcoming Church Office Closures

Monday, May 25 (Memorial Day)

#### St. Mark's is a "Reconciling in Christ" Congregation

St. Mark's is one of over 315 congregations, 22 synods and 12 organizations across the ELCA and the ELCIC (Canada) which have declared that people of all sexual orientations and gender identities are equally welcome to join fully in the worship and life of this Christ-centered community. For more information, please contact a pastor.

#### St. Mark's is a congregation of the Evangelical Lutheran Church in America

The Rev. Elizabeth Eaton, Presiding Bishop  
The Rev. Mark W. Holmerud, Bishop, Sierra Pacific Synod  
The Rev. Susan Strouse, Dean, San Francisco Conference  
Sister Parish: Cordero de Dios Lutheran Church, Soyapango, El Salvador



**Evangelical Lutheran  
Church in America**  
God's work. Our hands.